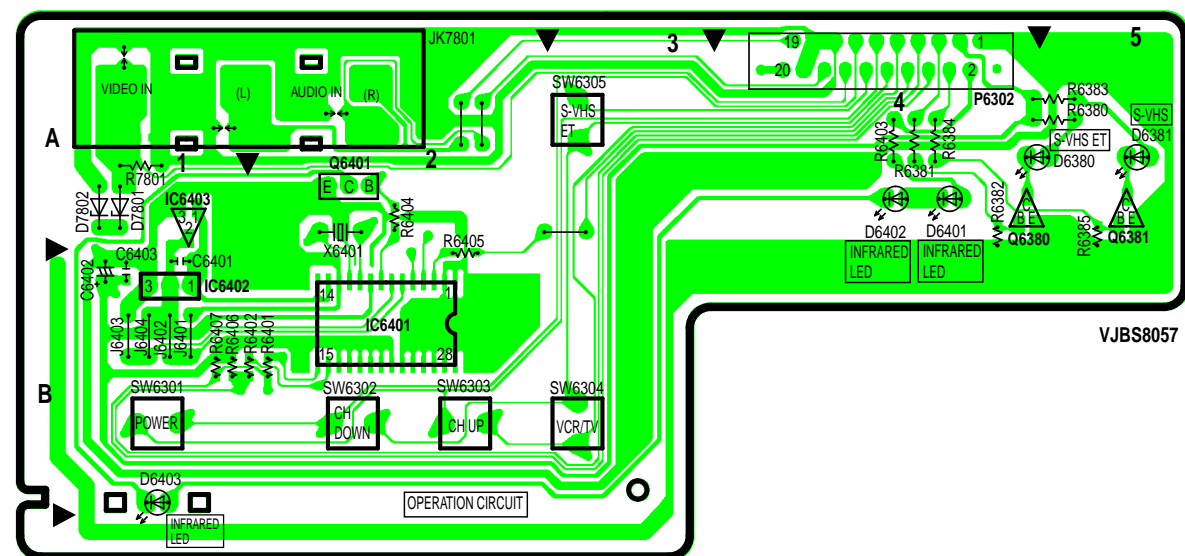
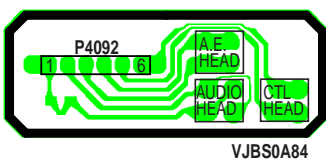


OPERATION C.B.A. VEPS8057B (A, B, C, D) / VEPS8057C (E, F, G)



NOTE:
CIRCUIT BOARD LAYOUT SHOWS COMPONENTS INSTALLED FOR VARIOUS MODELS.
FOR PROPER PARTS CONTENT FOR THE MODEL YOU ARE SERVICING,
PLEASE REFER TO THE SCHEMATIC DIAGRAM AND PARTS LIST.

NOTE:
CIRCUIT BOARD LAYOUT INCLUDES COMPONENTS WHICH ARE NOT USED.



AUDIO CONTROL HEAD P.C.B.

COMPARISON CHART OF MODELS & MARKS

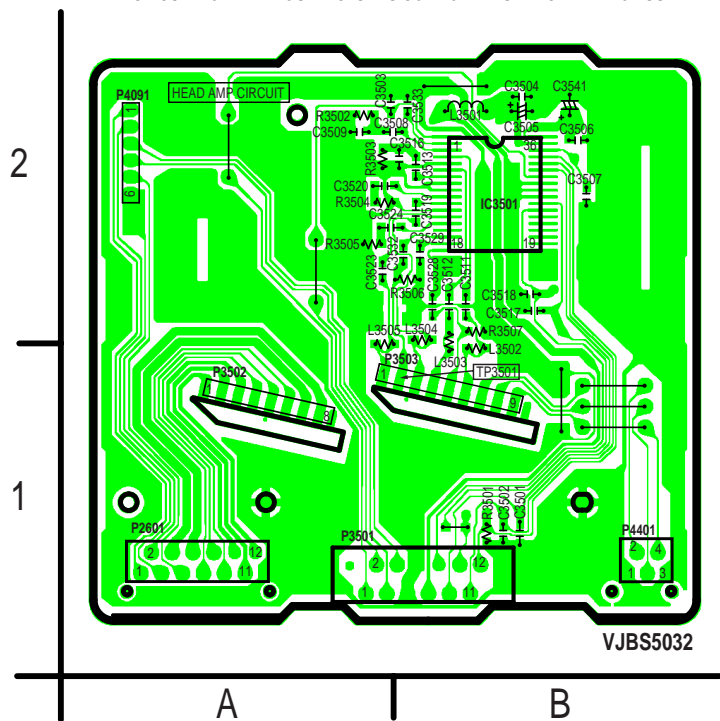
MODEL	MARK
PV-V4600	A
PV-V4620	B
PV-V4620-K	C
PV-V4630-K	D
PV-V4640	E
PV-V4640-K	F
PV-V4660	G

NOTE:
FOR SCHEMATIC DIAGRAM AND CIRCUIT BOARD LAYOUT NOTES,
REFER TO BEGINNING OF SCHEMATIC SECTION.

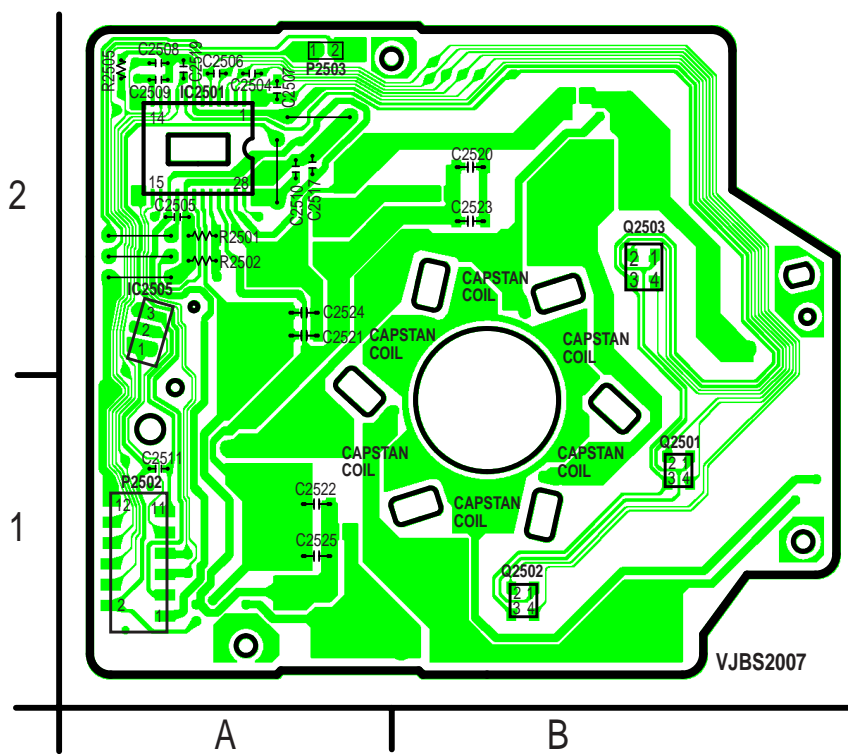
Hi-Fi AUDIO/VIDEO HEAD AMP C.B.A. VEPS5032A

NOTE:
CIRCUIT BOARD LAYOUT SHOWS COMPONENTS INSTALLED FOR VARIOUS MODELS.
FOR PROPER PARTS CONTENT FOR THE MODEL YOU ARE SERVICING,
PLEASE REFER TO THE SCHEMATIC DIAGRAM AND PARTS LIST.

NOTE:
CIRCUIT BOARD LAYOUT INCLUDES COMPONENTS WHICH ARE NOT USED.



CAPSTAN STATOR C.B.A. VEMS0331 (A, B, C, D) / VEMS0333 (E, F, G)



NOTE:
CIRCUIT BOARD LAYOUT SHOWS COMPONENTS INSTALLED FOR VARIOUS MODELS.
FOR PROPER PARTS CONTENT FOR THE MODEL YOU ARE SERVICING,
PLEASE REFER TO THE SCHEMATIC DIAGRAM AND PARTS LIST.

NOTE:
CIRCUIT BOARD LAYOUT INCLUDES COMPONENTS WHICH ARE NOT USED.

NOTE:
WHEN INSTALLING THE IC2501 (AN3845SC OR AN3846SC) OR CAPSTAN STATOR C.B.A.,
BE SURE TO APPLY SILICON GREASE (VFK1301). REFER TO "CAPSTAN STATOR C.B.A."
OF MACHANISM SECTION IN DISASSEMBLY/ASSEMBLY PROCEDURES.

NOTE:
THE FOLLOWING PARTS ON THE CAPSTAN STATOR C.B.A. ARE NOT SUPPLIED SEPARATELY.
PLEASE ORDER AND REPLACE WITH THE CIRCUIT BOARD ASSEMBLY INSTEAD OF INDIVIDUAL PARTS.
(Q2501, Q2502, Q2503, CAPSTAN COIL)